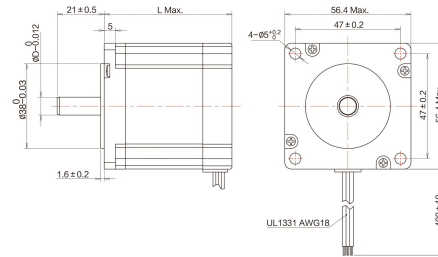


三相高性能混合式步进电机

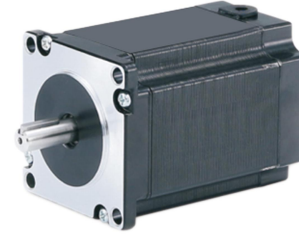
THREE PHASE STEPPING MOTORS

步距精度	温升	环境温度	绝缘电阻	耐压	径向跳动	轴向跳动
Step Angle Accuracy	Temperature Rise	Ambient Temperature	Insulation Resistance	Dielectric Strength	Shaft Radial Play	Shaft Axial Play
5%	80°C Max	-20°C ~ +50°C	100MΩ Min (500VDC)	500V AC 1 Minute	最大0.06mm (450g负载)	最大0.08mm (450g负载)

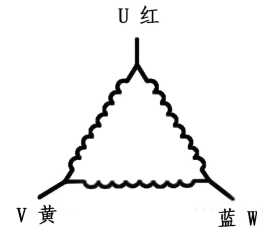
● 机械尺寸图/DIMENSION: UNIT=MM



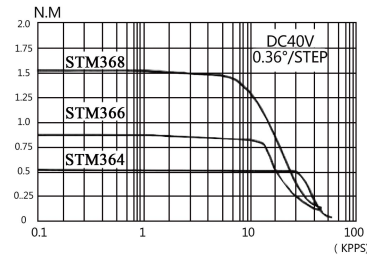
● 外观图/APPEARANCE



● 接线图/WIRING DIAGRAM



● 力矩曲线图/DYNAMIC TORQUE



● 技术参数/TECHNICAL SPECIFICATIONS

型号	机身长度	步距角	额定电流	电阻	电感	保持转矩	转子惯量	重量	轴径	轴伸(轴长)	适配驱动器
Model	Length L (mm)	Step Angle (°)	Current (A/phase)	Resistance (Ω)	Inductance (mH)	Holding Torque (N.m)	Rotor Inertia (g.cm ²)	Weight (Kg)	Shaft Diameter (mm)	Axis Stretch (mm)	Matching Driver
STM364	40.5	1.2°	5.2	0.242	0.22	0.45	100	0.5	6.35	21	STD356M
STM366	53.5		5.6	0.24	0.267	0.9	220	0.75	6.35	21	
STM368	76.4		5.8	0.29	0.39	1.5	380	1.1	8	21	
STM3610	102		5.8	0.376	0.5	2	530	1.57	8	21	STD3522M
STM368H	76.4		1.5	0.84	1.84	1.5	380	1.1	8	21	
STM3610H	102		2	0.84	1.84	2	530	1.57	8	21	

备注：以上为常规性产品，轴径、轴长以及不同轴产品可根据客户需求定制。