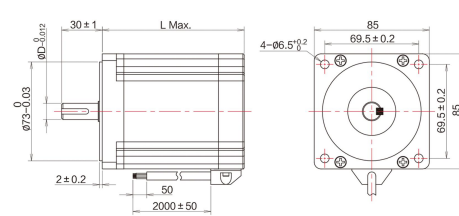


## 三相高性能混合式步进电机

## THREE PHASE STEPPING MOTORS

步距精度	温升	环境温度	绝缘电阻	耐压	径向跳动	轴向跳动
Step Angle Accuracy	Temperature Rise	Ambient Temperature	Insulation Resistance	Dielectric Strength	Shaft Radial Play	Shaft Axial Play
5%	80°C Max	-20°C ~ +50°C	100MΩ Min (500VDC)	500V AC 1 Minute	最大0.06mm (450g负载)	最大0.08mm (450g负载)

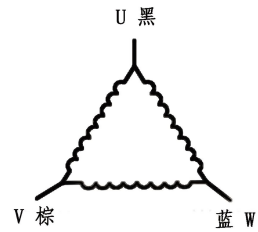
### ● 机械尺寸图/DIMENSION: UNIT=MM



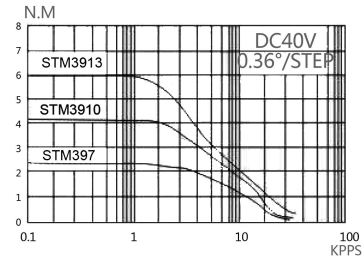
### ● 外观图/APPEARANCE



### ● 接线图/WIRING DIAGRAM



### ● 力矩曲线图/DYNAMIC TORQUE



### ● 技术参数/TECHNICAL SPECIFICATIONS

型号	机身长度	步距角	额定电流	电阻	电感	保持转矩	转子惯量	重量	轴径	轴伸(轴长)	键槽	适配驱动器
Model	Length L (mm)	Step Angle (°)	Current (A/phase)	Resistance (Ω)	Inductance (mH)	Holding Torque (N.m)	Rotor Inertia (g.cm²)	Weight (Kg)	Shaft Diameter (mm)	Axis Stretch (mm)	Keyway	Matching Driver
STM397	69	1.2°	5.8	0.5	0.9	2	1320	1.8	12	30	4×4×20	STD368M
STM397H	69		1.75	3.77	11.6	2	1320	1.8	12	30	4×4×20	STD3522M
STM3910	97		5.8	0.7	1.5	4	2400	2.8	12	30	4×4×20	STD368M
STM3910H	97		2	4.65	14.6	4	2400	2.8	12	30	4×4×20	STD3522M
STM3911	105		4	1.04	8.5	4	2700	3.0	12	30	4×4×20	STD368M
STM3913	125		5.8	0.9	2.17	6	3480	3.8	14	30	4×4×20	STD368M
STM3913H	125		3	2	8	6	3480	3.8	14	30	4×4×20	STD3522M
STM3915	145		5.8	0.88	2.63	8.5	4560	4.7	14	30	4×4×20	STD368M
STM3915H	145		3.2	2.6	9.57	8.5	4560	4.7	14	30	4×4×20	STD3522M

备注：以上为常规性产品，轴径、轴长以及不同轴产品可根据客户需求定制。